

# 2013 Annual Report

## Who We Are

Throughout 2013, the Garfield County Libraries continued our 75 year tradition of high quality customer service, passionate promotion of books, technology and literacy, and sought broad community engagement through partnerships, initiatives and events. The Libraries serve a population of approximately 56,000 residents through six branch libraries in Parachute, Rifle, Silt, New Castle, Glenwood Springs, and Carbondale, and online at [www.gcpld.org](http://www.gcpld.org). We are supported through a quarter cent of Garfield County sales tax and 1 mill of property tax. Since 2008, sales tax revenues have steadily declined and an additional sales tax refund spanning from 2011 into 2014 has severely impacted our reserves. Despite this, we have not cut hours or staffing, and have expanded library services during this challenging time.

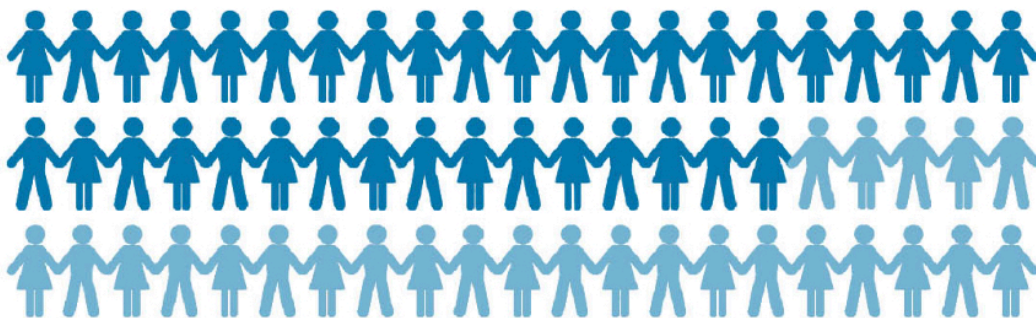
7 Board Members



6 Libraries



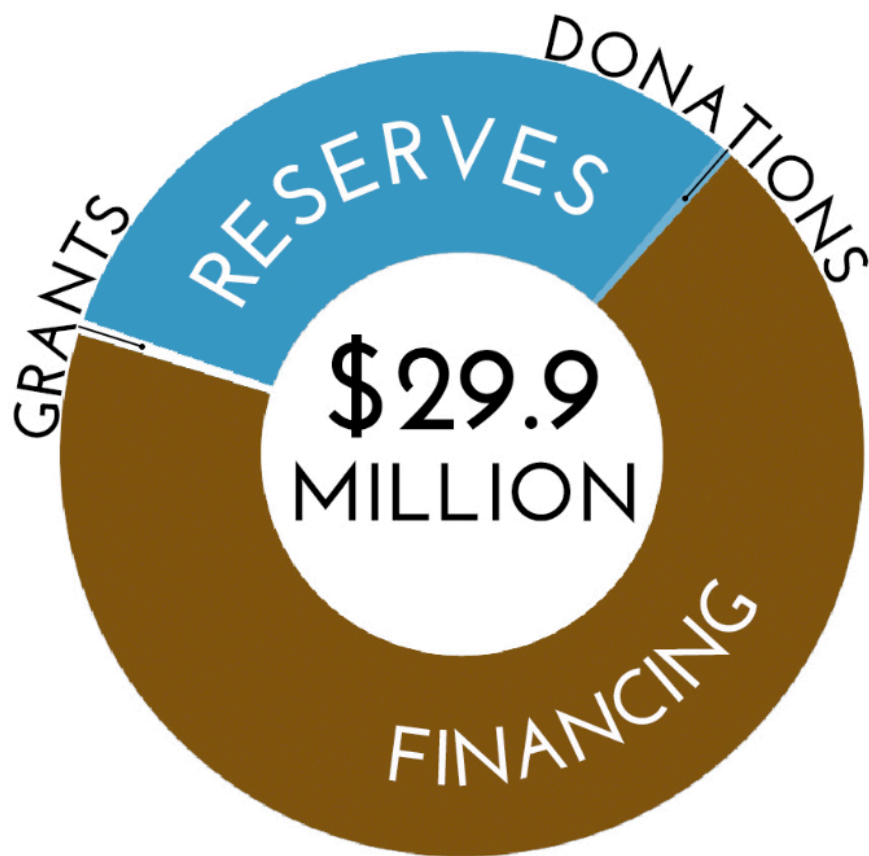
37 Full and 26 Part Time  
Staff Members



## Completion of Construction

A strategic plan was established in 2007, and set the vision for the manifestation of six new libraries in Garfield County. To serve the needs of the communities today as well as into the future, we designed and built the libraries in each community to fit the Colorado State Demographer Office's projected population numbers for 2030. All facilities were also designed to be managed with efficient use of staff resources and low operational costs through flexible use of space and durable, high quality fixtures and furnishings. A focus on providing a great return on the taxpayers' investment was essential throughout this process.

In 2013, we marked the completion of the construction phase by opening the final two new facilities in Carbondale and Glenwood Springs.

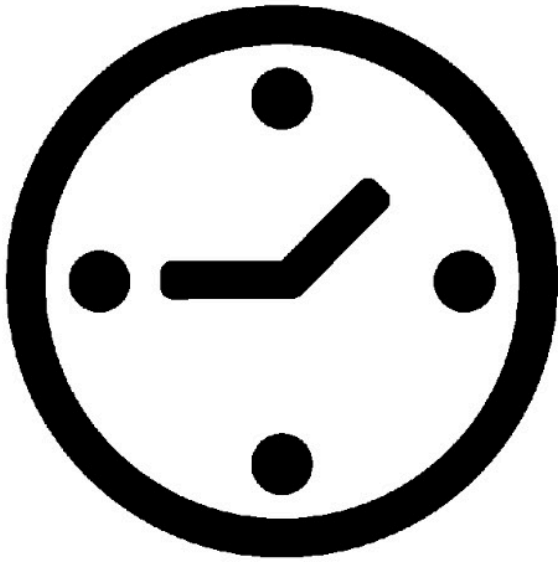


4 New and  
2 Remodeled Facilities  
\$164,983 in Grants  
\$137,386 in Donations  
\$50,000 Under Budget



# Community Spaces

The Garfield County Libraries serve as key community gathering places. Our public computers and wireless access offer a comfortable environment in which to work, study, stay up with current events, or keep in touch with friends. Our meeting rooms are a popular destination for civic groups, non-profits, and organizations of all kinds. All of our libraries offer study rooms that double as office space, tutoring classrooms, or just a quiet place to contemplate or meet friends.



16,016 Hours Open

613,728 Visitors

10.74 Annual Visits Per Capita



## Access to Library Materials

Borrowing consists of the lending of books, eBooks, periodicals, CDs, audios, videos and other library materials to the public, and still reflects the largest share of library service. The Libraries lent over 600,000 items again in 2013, with our popular holds service accounting for approximately 16% of that. In November, we transitioned to the next generation of library management software called Sierra, and our Circulation Coordinator team took the lead in learning the new system, training staff, and troubleshooting specific problems as they arose.

41,467

Registered Borrowers

675,712 Items Borrowed

208,580 Total Items  
in Our Collection

30+ Million Items  
Available to Borrow  
Through Partnerships



## Access to Technology

While many Garfield County households have Internet access, many others still do not. Demand for public computers and internet access remains strong in most locations. Another growing part of access is “tech support” - as reflected in our strong coaching in the use of various devices and software programs for our patrons.

38,016 Wifi Uses

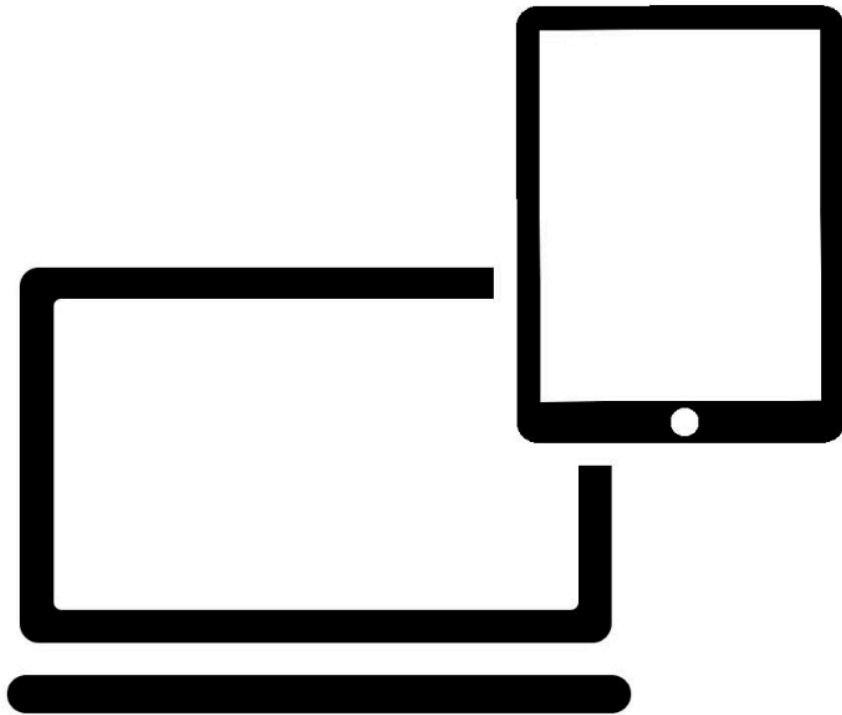
127 Public Computers

55,729 Hours of  
Public Computer Use



# Online Services

Virtual services continue to grow in breadth and use. Demand for downloadable books, audiobooks, magazines, music, and videos is rapidly increasing. Many users interact with us almost entirely online, placing holds remotely and checking items out through our self-check stations. We purchased the Zinio online magazine service, and increased our spending on eBooks (both those purchased through Marmot and our own Overdrive Advantage account) with a focus primarily on providing more copies of popular titles.



16,515 Downloads of  
Electronic Items

117% Increase in  
Downloads from 2012

302,011 Website Visits



## Events, Classes, and Programs

Library programming is designed to meet the needs of users all ages. For young children, the Libraries offered more than 600 storytimes, which saw over 10,000 attendees in 2013. The early literacy skills that children learn in storytime help them translate words to images, develop their brains and nurture the cognitive, emotional and social skills they need to develop the habits of life-long learners. School-age children and teens have many opportunities at the Libraries to participate and advance their skills in a safe environment. In 2013, they attended [the 5th Element STEM programs](#), fun hands-on science experiments, Rifle's Maker Camp, and Reading Buddies which pairs teens with young readers. Adult programs and classes include technology training, skills development, and computer literacy, and in 2013 also included discussion opportunities for books and films, [the Big Read featuring \*The Grapes of Wrath\*](#), a Civil War series, and the America's Music series. Additionally, our [Summer Reading Program](#) (which consists of activities for children, teens, and adults) set a new record in 2013 for number of participants.

4,802  
Summer Reading  
Participants

62,860 Days of Reading  
Tallied by Summer  
Reading Participants

101 Summer  
Reading Events

7,676 People Attended  
Summer Reading Events

48 Big Read  
Events

1,456 People Attended  
Big Read Events

1,396 Total  
Events in 2013

26,334 People Attended  
Events in 2013



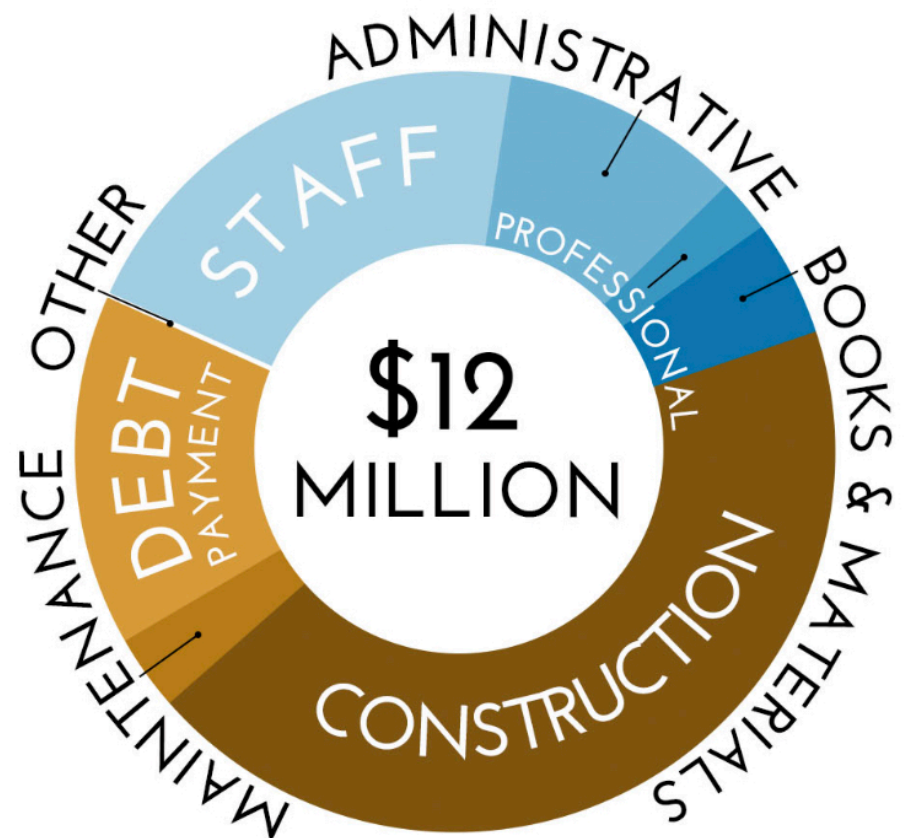
# Revenues, Expenses, and the Impact of a State Settlement

Revenues were deeply impacted by the continuing sales tax refunds from the State's Noble Gas Settlement, among others. The settlement withheld another \$729,840 from the Libraries' operating budget, for a total of \$1.7 million from 2011 through 2103. Sales tax collections in 2013 were \$1.47 million, down \$830,000 from 2012, making the loss of tax income that even more challenging.

Property tax was up slightly at \$3.9 million in 2013, giving us a combined income of \$6.2 million including fees, interest, and specific ownership tax. The Garfield County Public Library Foundation brought in an additional \$160,000 in donations and grants, which was used primarily for capital construction of new facilities.

The \$12 million in expenditures reflects \$6.7 million in construction costs, \$3.5 million in operational costs, and \$1.8 million in debt service. The Libraries carried forward a reserve fund balance of almost \$4.3 million.

## REVENUES & EXPENSES



# Community Engagement

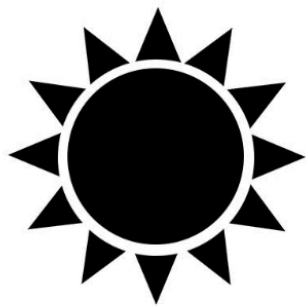
The Garfield County Libraries are strong community partners. Our staff engages their communities by attending civic and community meetings, serving on local boards, and working with community and educational groups to better understand the unique issues each community faces. Essential partnerships include our local school districts, Colorado Mountain College (CMC), Raising A Reader, Clean Energy for the Region (CLEER), Aspen Community Foundation, and Literacy Outreach.

Building on the success of the New Castle Branch Library project, CMC's Integrated Energy Program agreed to again partner with the Libraries in 2013 to put energy-producing solar photovoltaic (PV) array atop the new Silt facility. Students not only helped design the system for Silt, but gained knowledge and experience to become certified in their field. These projects gave students real-world experience that took their knowledge beyond the confines of a typical classroom.

In September, the Libraries provided Kindergarteners and other new students throughout Garfield County the opportunity to get a library card as part of our annual library card campaign. We also offered Teacher Outreach cards which provide educators no-risk access to reading materials for their students. Gus the Bus was a new addition to our partnership with Garfield RE-2 and the Aspen Community Foundation in 2013, and brought a mobile preschool to the communities of Rifle, Silt and New Castle.

We continue to partner with Raising A Reader through offsite visits during the fall and winter, and Blue Bag Library days in the spring.

19.6 kW of Solar Panels  
Installed in Silt



1,659 Children Reached  
Through Raising a Reader



## Reader's Advisory and Research Services

The Garfield County Libraries place a strong emphasis on encouraging life-long reading habits. Staff members train and focus on making book recommendations for people of all ages. The library also hosts a number of book clubs for young readers to critically explore stories and discuss their meanings in their lives. Adult book clubs continue to be popular as well with a number of new clubs forming this past year.

Our youth and adult staff members provide informational and research assistance to thousands of patrons each year. Through in-person interviews, phone requests, email, and one-on-one consultations, our staff responds to requests for information in a timely fashion with well-researched answers. The Garfield County Libraries also participate in AskColorado, an online reference source serving our users 24/7.



## Vibrant Volunteers

Volunteers made a huge difference in what the Libraries accomplished in 2013 by allowing us to focus staff energies in specific areas. Opportunities to work with children, book sales, shelving, placing calls for holds, reading to seniors, delivering homebound materials, library moves, programs and assisting with clerical tasks make our volunteer services a vibrant program designed to provide job skills, personal growth and community involvement.

Additionally, Friends of the Libraries raise money through book sales to support materials, programs and services.

894 Volunteers

5,195 Hours

Contributed by Volunteers



# A Great Place to Work

Professional development remained a high priority in 2013, with staff attending numerous training opportunities including conferences, college classes, webinars, employee orientations and other training opportunities.



## Donors

The Garfield County Public Library Foundation (GCPLF) would like to recognize 2013 donors who went above and beyond for our libraries. Connie and Jim Calaway sponsored the Community Room at the new Carbondale Branch Library and worked with artist James Surls to display his sculptures on long-term loan in the building. Alpine Bank continues to provide exceptional support to all of our libraries including sponsoring a pillar at the Carbondale Branch, purchasing meeting rooms at Glenwood Springs and New Castle, and donating a Lanny Grant painting to the Rifle Branch. Colorado Mountain College has been a tremendous support to the District through our joint project in Glenwood Springs, the Common Reader program, Mother Reads training, and through the installation of solar panels at the New Castle and Silt Branch Libraries with the help of the Integrated Energy Program students and faculty. GCPLF has also greatly benefitted from the Garfield County Federal Mineral Lease District (GCFMLD) grants program. In 2013, GCFMLD funds assisted with fifth day programming in several communities, put solar panels on the Silt Branch and allowed us to create a maker studio at the Rifle Branch Library. We are so thankful for the support of these tremendous individuals and organizations!

## Authors

Alpine Bank  
Arts Midwest  
Aspen Community Foundation  
Boettcher Foundation  
Colorado Stone Quarries  
Community Office for Resource Efficiency (CORE)  
Connie and Jim Calaway  
El Pomar Foundation  
Friends of the Glenwood Springs Library  
Friends of the Gordon Cooper Library  
Friends of the Rifle Branch Library  
Garfield County Federal Mineral Lease District  
Jaywalker Lodge  
Kinder Morgan  
Lani Kitching  
Library Services and Technology Act Grants  
Mount Sopris Rotary Club  
R.A. Nelson  
Renewable Energy Trust (Xcel)  
Temple Hoyne Buell Foundation  
United States Department of Agriculture

## Editors

Anonymous gift of art (Rifle)  
The Burgeon Group  
Carbondale Rotary Foundation  
Colorado State Library  
Friends of the Parachute Branch Library  
Friends of the New Castle Branch Library  
Friends of the Silt Branch Library  
Glenwood Springs Lion's Club  
HP Geotech  
Jane and Richard Hart  
Gary Hershoren and Ilene Harris  
Ernst and Wilma Martens Foundation  
Neil-Garing Insurance  
The Thrift Shop of Aspen  
US Bank  
Katherine E. Williams Advised Fund

## In Memoriam

Judy Elzinga  
Dr. Gary B. Kitching  
Frank A. Smotherman  
Herbert and Genevieve Sullivan

## Readers

Gwen Ballard

William and Jere Bolitho

John and Nancy Brooks

Elise Burkhart

Chapter AO PEO

Colorado Special Districts

Pat and Alan Conway

Jill Elzinga

Garfield County Housing Authority

Jeff Johnson

Z. J. Kolber

Oscar McCollum

Heidi McGuire

Kathleen Molitor

Moore Construction

Rick and Kim Nicholson

Jayne Poss

Daniel Quiat

Rifle Community Foundation

Southside Conservation District

Target

## Community Partners

Alpine Bank

Aspen Community Foundation

Castle Valley Children's Clinic

City Market

City of Glenwood Springs

City of Rifle

Clean Energy for the Region (CLEER)

Colorado Mountain College Integrated Energy Program

Colorado Workforce Services

Garfield County

Garfield County School District No. RE-2

Garfield County School District #16

Grand River Hospital District

Hospice of the Valley

LIFT-UP

Literacy Outreach

Raising A Reader

Roaring Fork School District RE-1

Town of Carbondale

Town of New Castle

Town of Parachute

Town of Silt

## Summer Reading Sponsors

Aspen Community Foundation

Bluebird Café

Brenden Theater

Carbondale Recreation & Community Center

Dairy Queen

Daylight Donuts

Dickey's Barbeque Pit

Domino's Pizza

Glenwood Caverns Adventure Park

Grand Valley Recreation Center

Hogback Pizza

Kum & Go

Lazy Bear Restaurant

McDonald's

Peppino's Pizza

Silt Pizza

Sonic

Shur Tech Brands Duct Tape

White House Pizza

7-11